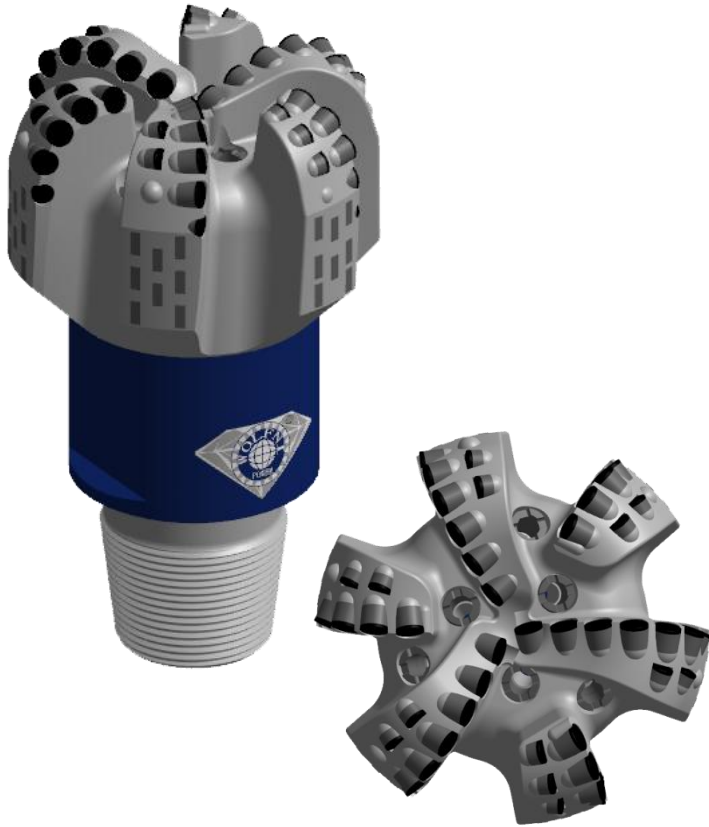




Specs: 8 1/2" WM616D(215.9mm)

IADC:M423

ID:WFN216M16601A



Design character:

■ Special design of back-rake angles will decrease torque on bit, increase bit aggressiveness, improve efficiency of ROP.

■ Adopting CFD emulational technology to calculate to optimize PDC bit, then reduce possibility of heavy breaking and wearing of bit.

■ Special gauge design has more cutters placed on gauge to prolong life time of PDC bit in high abrasive formation, to avoid diameter shrinkage for gauge wearing.

■ Suit for well drilling in low compressive strength, even texture soft-medium rock formation. Such as wake shale, density marlstone, strong batt, wake sandstone, limestone, and soft gravel, etc.

Specialized in hard formation for oil well or water well, Excellent drilling speed & long life-span using

Specifications:

| | |
|------------------------|--|
| Blade Qty | 6 |
| Total Cutters | 31 |
| Primary Cutter Size | 15.88mm |
| Assistant Cutter Size | 13.44mm |
| Gauge Cutter Size | 13.44mm or PDC block |
| anti-quake ball size | 13.44*15 |
| Nozzle Qty. | 6 |
| Nozzle type | 1-12UNF 12/32" TFA0.663in ² |
| Crown length | 112mm |
| Gauge length | 76mm |
| Connetion Size | 4 1/2REG |
| Make-up Torque | 16.63-23.71kN.m |
| Assembly groove wID:th | 120mm |
| Bit Weight | ≈65kg |

Operating Parameters:

| | |
|-------------------|-----------|
| Rotary speed | 60-260RPM |
| Bit Weight on bit | 30-100KN |