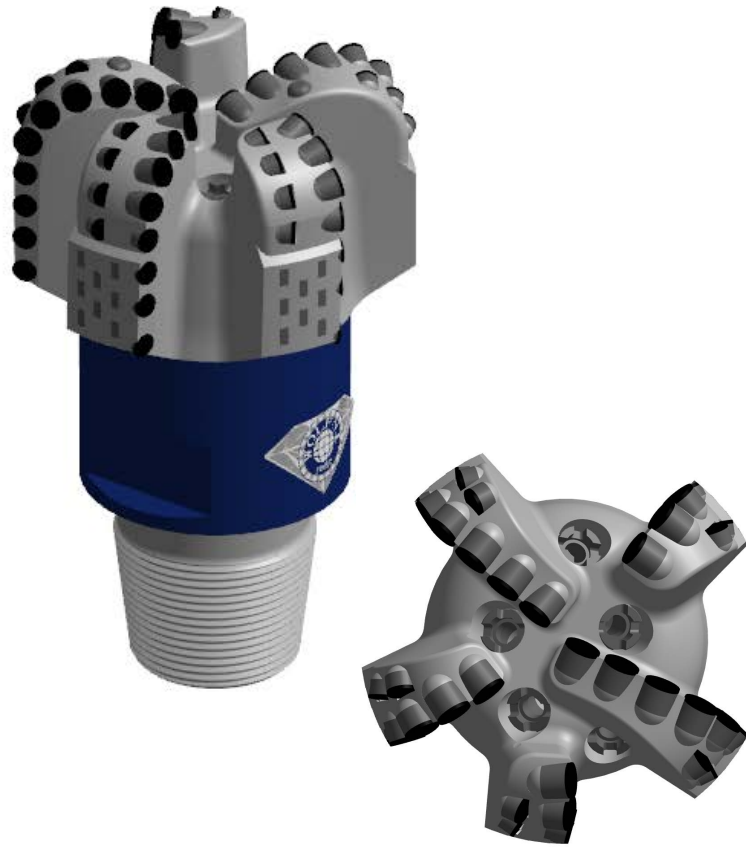




**Specs: 8 1/2" WM516D(215.9mm)**

**IADC:M423**

**ID:WFN216M16515A**



#### **Design character:**

■ Special design of back-rake angles will decrease torque on bit, increase bit aggressiveness, improve efficiency of ROP.

■ Adopting CFD emulational technology to calculate to optimize PDC bit, then reduce possibility of heavy breaking and wearing of bit.

■ Special gauge design has more cutters placed on gauge to prolong life time of PDC bit in high abrasive formation, to avoid diameter shrinkage for gauge wearing.

■ Suit for well drilling in low compressive strength, even texture soft-medium rock formation. Such as wake shale, density marlstone, strong batt, wake sandstone, limestone, and soft gravel, etc.

Specialized in hard formation for oil well or water well, Excellent drilling speed & long life-span using

### **Specifications:**

Blade Qty	5
Total Cutters	32
Primary Cutter Size	15.88mm
Assistant Cutter Size	13.44mm
Gauge Cutter Size	13.44mm or PDC block
anti-quake ball size	13.44*8
Nozzle Qty.	5
Nozzle type	1-12UNF 12/32" TFA0.552in <sup>2</sup>
Crown length	121mm
Gauge length	56mm
Connetion Size	4 1/2REG
Make-up Torque	16.63-23.71kN.m
Assembly groove wID:th	120mm
Bit Weight	≈65kg

### **Operating Parameters:**

Rotary speed	60-260RPM
Bit Weight on bit	30-100KN