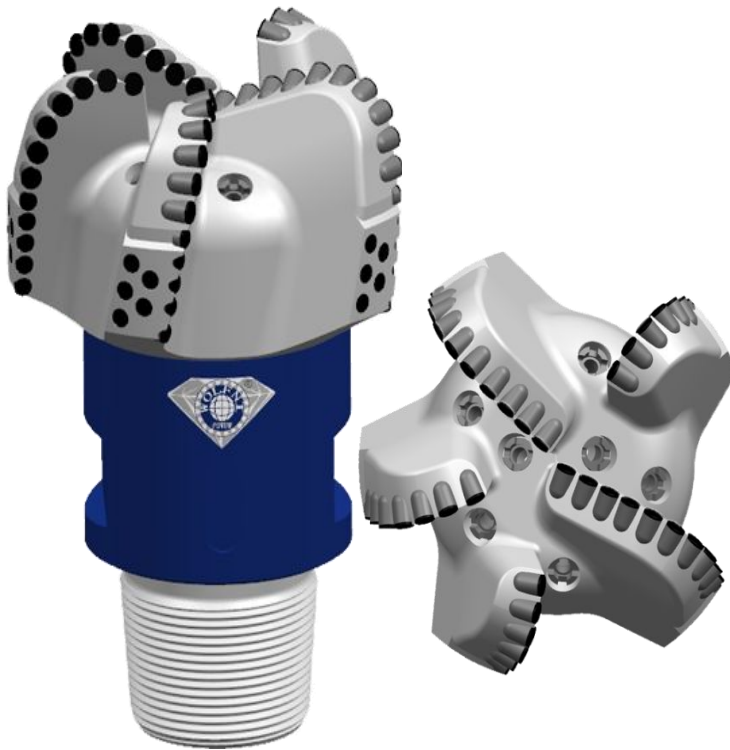




Specs:12 1/4" WS516GS(311.15mm)

IADC:S323

ID:WFN311S16503B



Design character:

■ These back redressings at the base of gauge avoid difficult of pulling PDC bits out of hole in unconsolidated formation, and trim wall of well.

■ Spiral blades increase contact area between PDC bit and well wall to keep drilling stably, to prolong lifespan of PDC bits

■ the hydrofoil shape of the gauge channels hydraulic fluid and cutting to the annulus. This streamlined flow deters bailing initiation caused by vortices and eddies.

■ Suit for well drilling in low compressive strength, even texture soft-medium rock formation. Such as wake shale, density marlstone, strong batt, wake sandstone, limestone, and soft gravel, etc.

Specialized for medium /hard formation oil /gas well and have a strong formation adaptability.

Specifications:

Blade Qty	5
Total Cutters	53
Primary Cutter Size	15.88mm
Assistant Cutter Size	Non
Gauge Cutter Size	13.44mm
anti-quake ball size	Non
Nozzle Qty.	7
Crown length	181.8mm
Gauge length	65.5mm
Connetion Size	6 5/8REG
Make-up Torque	38—43.4kN·m
Assembly groove wID:th	180mm
Bit Weight	100.5kg

Operating Parameters:

Rotary speed	60-240RPM
Flow rate	50-60L/S
Weigh on bit	30-120KN